

# SRBC

SUSQUEHANNA RIVER  
BASIN COMMISSION

NY ▪ PA ▪ MD ▪ USA

*Coordinated planning, management, and  
conservation of the water resources of  
the Susquehanna River Basin.*

Your River...Our Mission  
**GET TO KNOW US**

[www.srbc.net](http://www.srbc.net)

A federal-interstate compact, SRBC builds on five decades of achievements and fosters collaborative partnerships, coordinated action and use of the best science. Program activities align with four key areas:

## Water Supply



Water use approvals are grounded in sound science and monitoring — with an eye toward ongoing water supply availability.

## Flooding & Drought



State-of-the-art flood warning system saves lives through early communications of rising river levels to affected communities. Drought planning focuses on protecting water supplies.

## Water Quality



State-of-the-art water quality monitoring crosses jurisdictional boundaries. Partnership projects restore impaired streams and remedy harmful mine drainage.

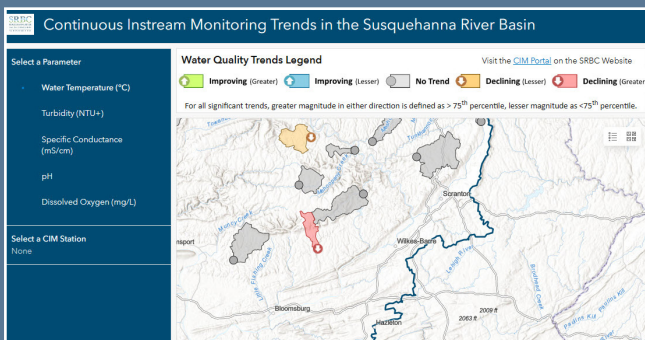
## Watershed Management



Projects improve habitat and promote land use practices that support healthy aquatic ecosystems. Water withdrawal approvals include conditions to protect stream flows.

*Guardian • Facilitator • Financial Supporter • Educator • Partner*

## Online Portals, Story Maps & Dashboards Interpret Scientific Data



*The Continuous Instream Monitoring Dashboard provides water quality trends for all stations reflecting more than ten years of instream data.*

### Search for information about:

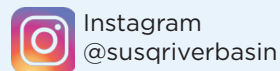
- status of water use projects
- **real-time water quality data for local streams**
- chemical data for parameters associated with mine drainage impacts
- **water use and availability for the basin's watersheds**
- nutrient and sediment pollutant monitoring
- **flood warning and preparedness**

making HEADLINES

See more at [www.srbc.net/about/news](http://www.srbc.net/about/news)

- SRBC scientists are using **eDNA (environmental DNA) to track invasive fish species** in the Susquehanna River Basin that may be harmful to native wildlife.
- SRBC continues the **Eels in the Classroom** program to complement ongoing restoration work occurring in the basin.
- The **Hydrologic Conditions Monitor** portal tracks status of water use projects that are impacted by weather and operating restrictions.
- With annual award totals of \$4 to \$6 million, **Consumptive Use Mitigation Grants** support projects that lessen the impacts of consumptive use and improve the availability and quality of water in the basin during droughts.
- A recently awarded **design contract for treatment of mine drainage** will vastly improve the water quality in the basin's Tioga River.
- **Groundwater use projects tap SRBC grants** to improve the collection and reporting of water level data in groundwater wells.

### FOLLOW US ON:



### CONTACT:

Gene G. Veno, Director Governmental Affairs & Public Advocacy  
717-238-0423 Ext 1311 • [gveno@srbc.net](mailto:gveno@srbc.net)

Subscribe to *The Guardian E-Newsletter*