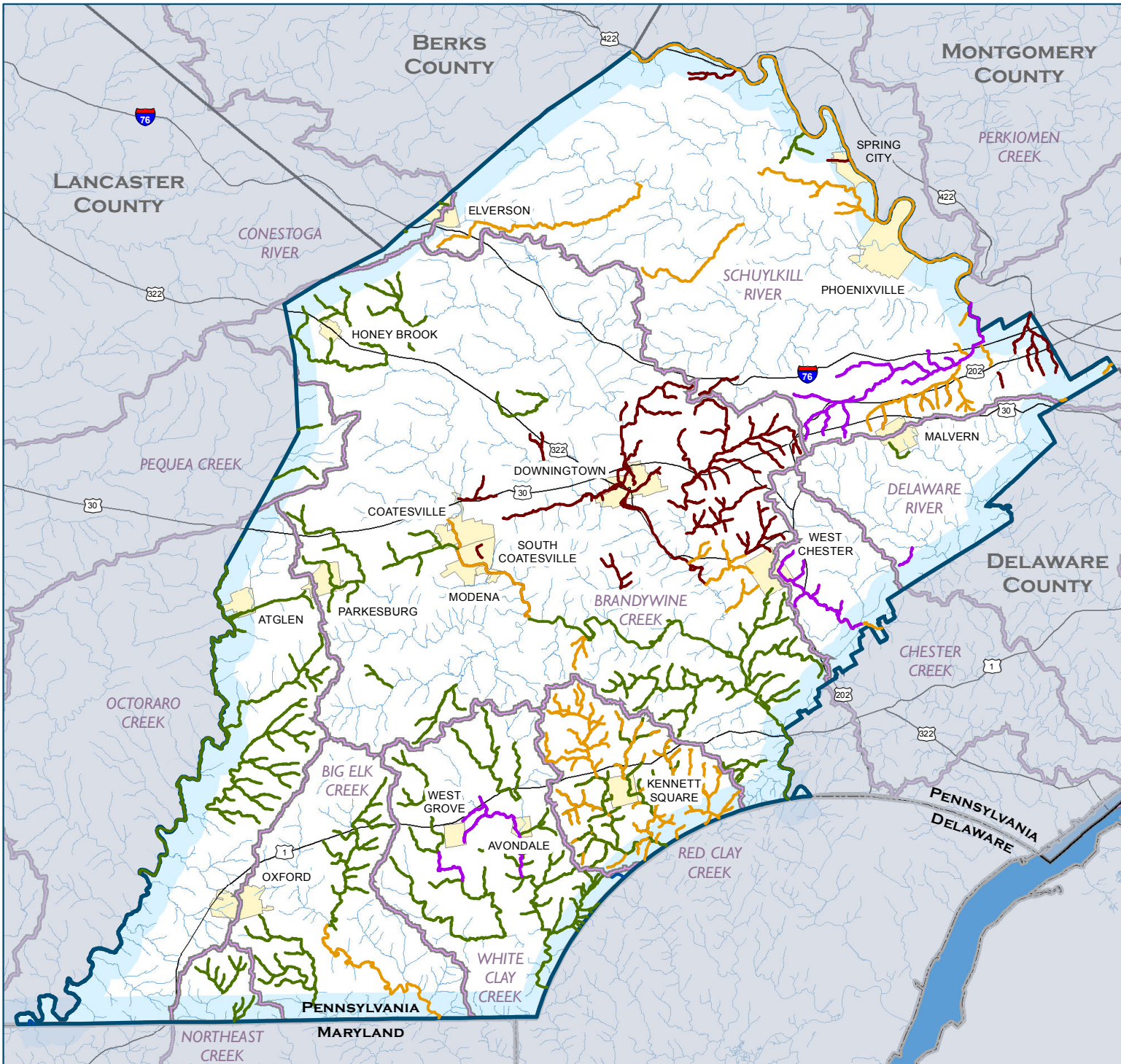








IMPAIRED WATERWAYS IN CHESTER COUNTY, PA, 2011



Impaired Waterway Miles by Type*

-  Agriculture - 333 mi.
-  Runoff - 102 mi.
-  Point Source - 43 mi.
-  Other - 182 mi.

-  Unassessed Stream - 1 mi.
-  River/Stream - 1,400 mi.
-  Major Road
-  County Boundary
-  State Boundary

-  Major Watershed
 -  City/Town
- 2 0 2 Miles



PREPARED FOR THE CHESAPEAKE BAY FOUNDATION
BY THE SUSQUEHANNA RIVER BASIN COMMISSION



SOURCE: Impaired Streams, 2011 Integrated List from PADEP;
*DISCLAIMER: Depicts all stream assessment categories by primary source of impairment. Streams may be assessed on up to 4 categories, therefore impairment miles may include duplication; Intended for Educational Display Purposes Only; SRBC (1280b) 04-22-2011

