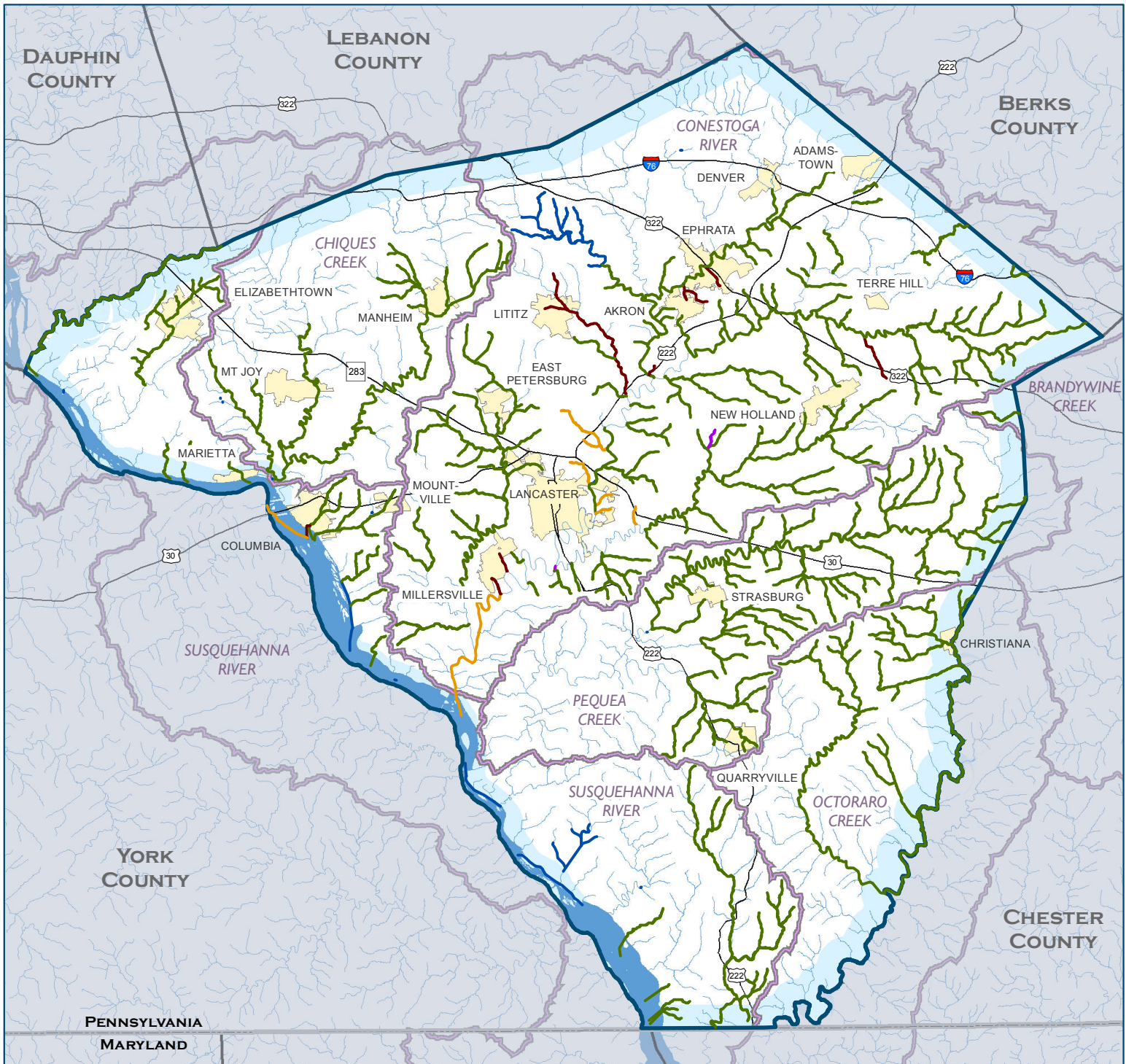


# IMPAIRED WATERWAYS IN LANCASTER COUNTY, PA, 2011



## Impaired Waterway Miles by Type\*

- Agriculture - 668 mi.
- Runoff - 16 mi.
- Point Source - 1 mi.
- Other - 19 mi.

- Unassessed Stream - 30 mi.
- River/Stream - 1,499 mi.
- Major Road
- County Boundary
- State Boundary

- Major Watershed
  - City/Town
- 2 0 2 Miles



PREPARED FOR THE CHESAPEAKE BAY FOUNDATION  
BY THE SUSQUEHANNA RIVER BASIN COMMISSION

SOURCE: Impaired Streams, 2011 Integrated List from PADEP;  
\*DISCLAIMER: Depicts all stream assessment categories by primary source of impairment.  
Streams may be assessed on up to 4 categories, therefore impairment miles may include duplication;  
Intended for Educational Display Purposes Only: SRBC (1243b) 02-22-2011

