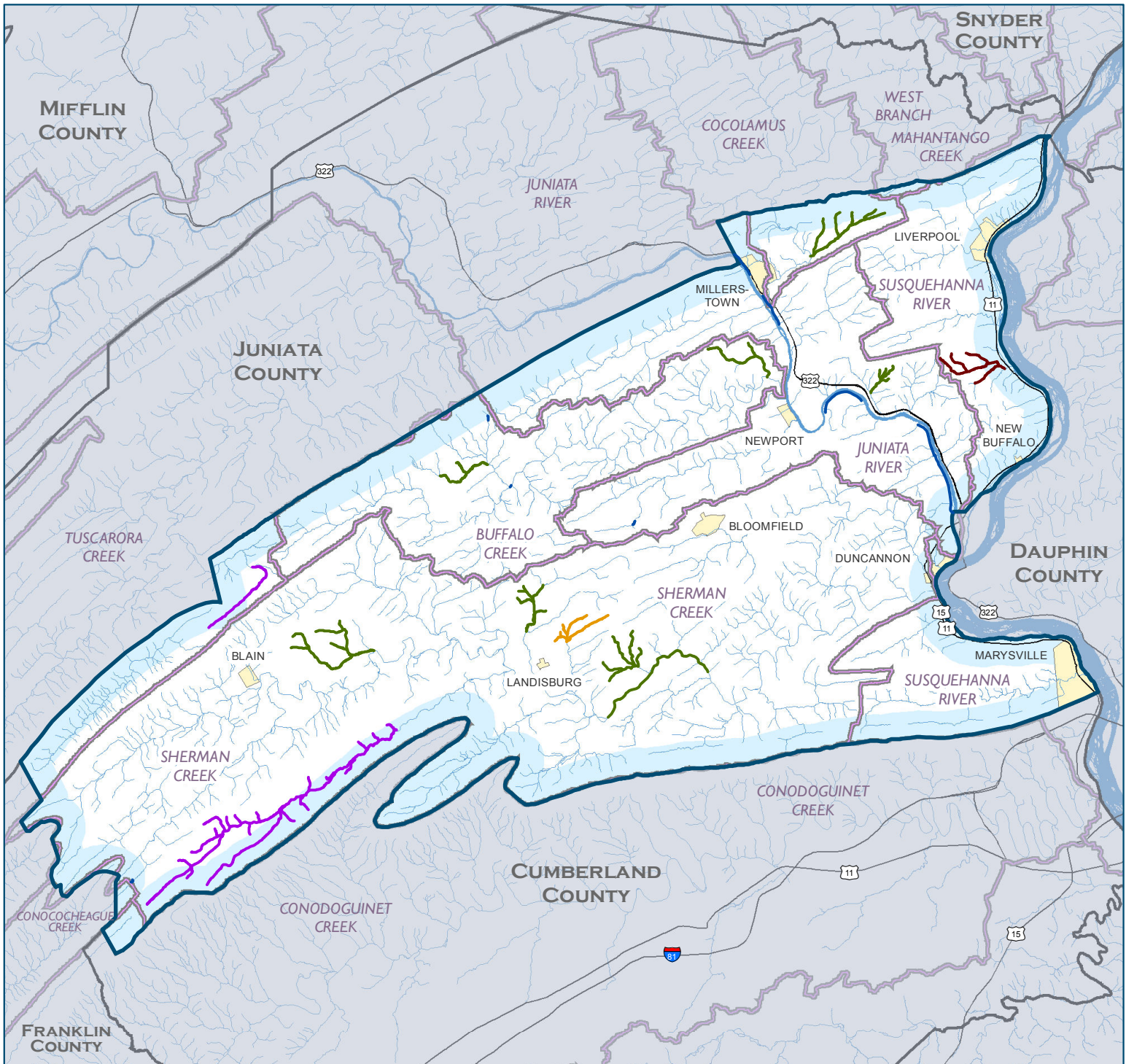




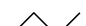



IMPAIRED WATERWAYS IN PERRY COUNTY, PA, 2011



Impaired Waterway Miles by Type*

-  Agriculture - 41 mi.
-  Atmospheric Deposition - 31 mi.
-  Residential Runoff - 6 mi.
-  Removal of Vegetation - 4 mi.

-  Unassessed Stream - 8 mi.
-  River/Stream - 1,065 mi.
-  Major Road
-  County Boundary

 Major Watershed

 City/Town

 2 0 2 Miles



**PREPARED FOR THE CHESAPEAKE BAY FOUNDATION
BY THE SUSQUEHANNA RIVER BASIN COMMISSION**



SOURCE: Impaired Streams, 2011 Integrated List from PADEP;
*DISCLAIMER: Depicts all stream assessment categories by primary source of impairment.
Streams may be assessed on up to 4 categories, therefore impairment miles may include duplication;
Intended for Educational Display Purposes Only; SRBC (1243k) 03-30-2011

