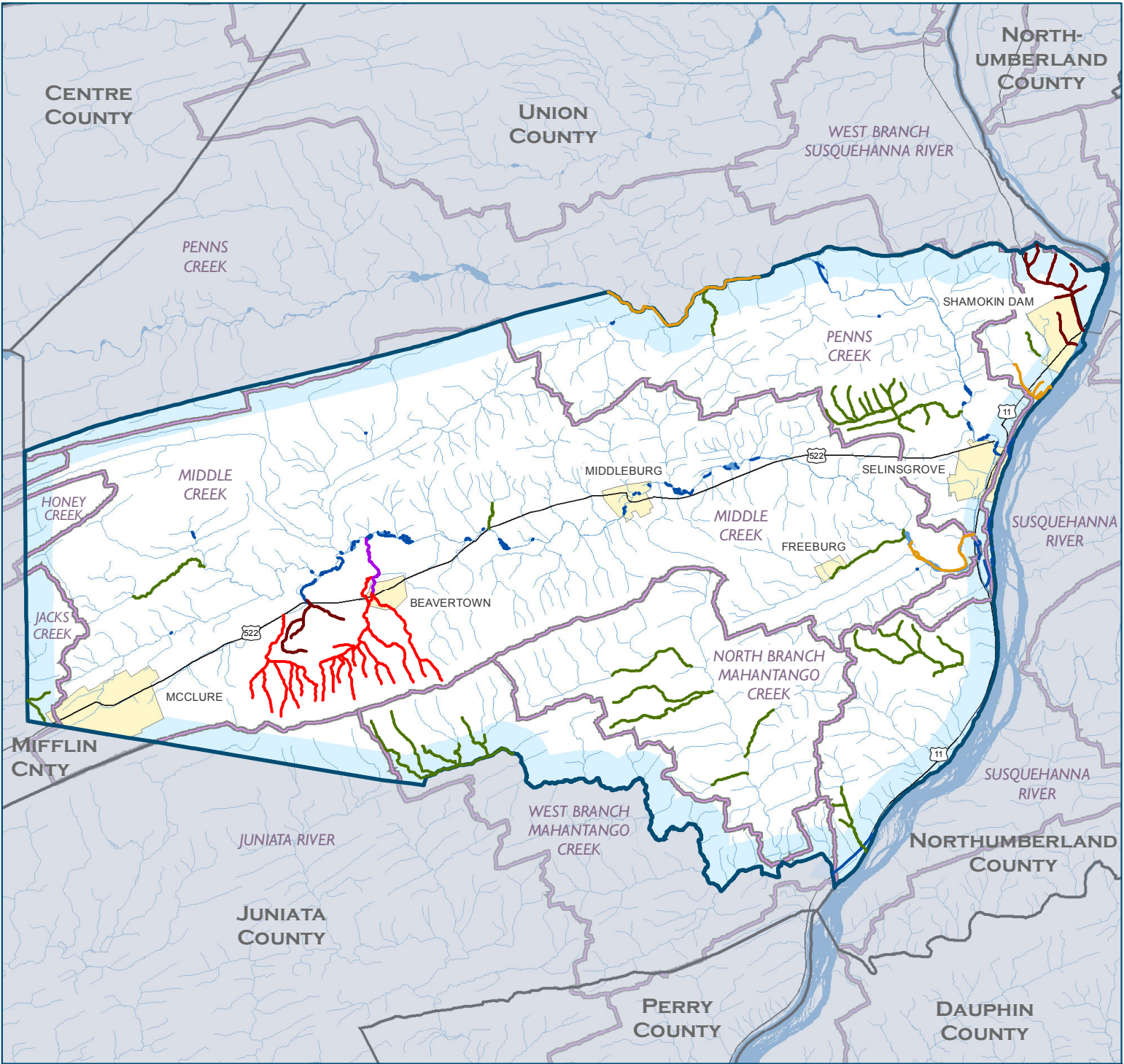







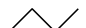



IMPAIRED WATERWAYS IN SNYDER COUNTY, PA, 2011



Impaired Waterway Miles by Type*

-  Agriculture - 58 mi.
-  Atmospheric Deposition - 29 mi.
-  Runoff - 12 mi.
-  Point Source - 2 mi.
-  Other - 11 mi.

-  Unassessed Stream - 15 mi.
-  River/Stream - 745 mi.
-  Major Road
-  County Boundary

-  Major Watershed
-  City/Town



PREPARED FOR THE CHESAPEAKE BAY FOUNDATION
BY THE SUSQUEHANNA RIVER BASIN COMMISSION

SOURCE: Impaired Streams, 2011 Integrated List from PADEP;
*DISCLAIMER: Depicts all stream assessment categories by primary source of impairment.
Streams may be assessed on up to 4 categories, therefore impairment miles may include duplication;
Intended for Educational Display Purposes Only; SRBC (1243e) 04-22-2011

