

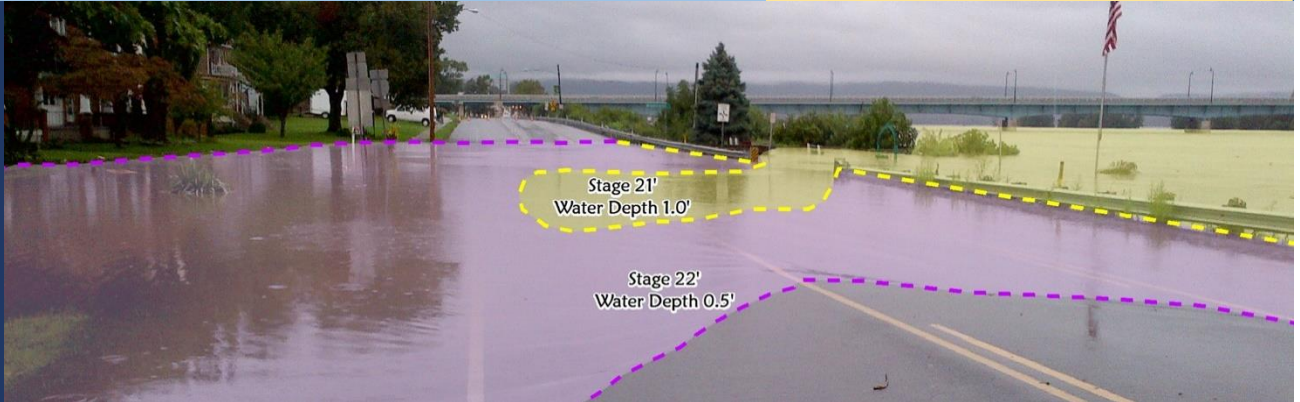


CKLN6

SUSQUEHANNA RIVER at
CONKLIN, NEW YORK
(USGS Gage No. 01503000)

Flood inundation maps, available online for this location, provide emergency managers, government officials, and the public an effective tool to prepare for, respond to, and recover from a significant flood event.

FLOOD INUNDATION MAPPING



[Find your stage map here!](#)

HOW IT WORKS

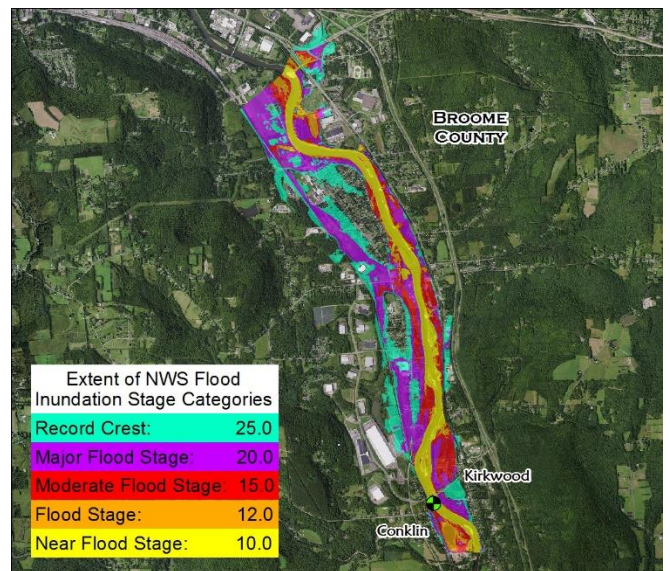
River Flooding: The National Weather Service (NWS) issues river forecasts based on expected rainfall and river conditions in the watershed. Based on the forecast from NWS, you can view a map that most closely resembles the predicted extent of the flood.



The map above shows the extent and depth of a flood resulting from stage 25.0' (record flood stage) at Kirkwood, NY.

MAP ACCESS INSTRUCTIONS

1. Google "NOAA AHPS Inundation."
2. Select link for "Inundation Mapping Locations."
3. Zoom to New York region of the national map.
4. Click on blue dot (gage location) near community of interest.
5. Select "Inundation Levels" radio button in upper left corner.
6. Select stage of interest from column on left to view expected inundation with that stage.
7. Find a specific address using location search field in upper right corner.
8. Turn off/on "Map Overlays" using check boxes below map.



US Army Corps of Engineers.

